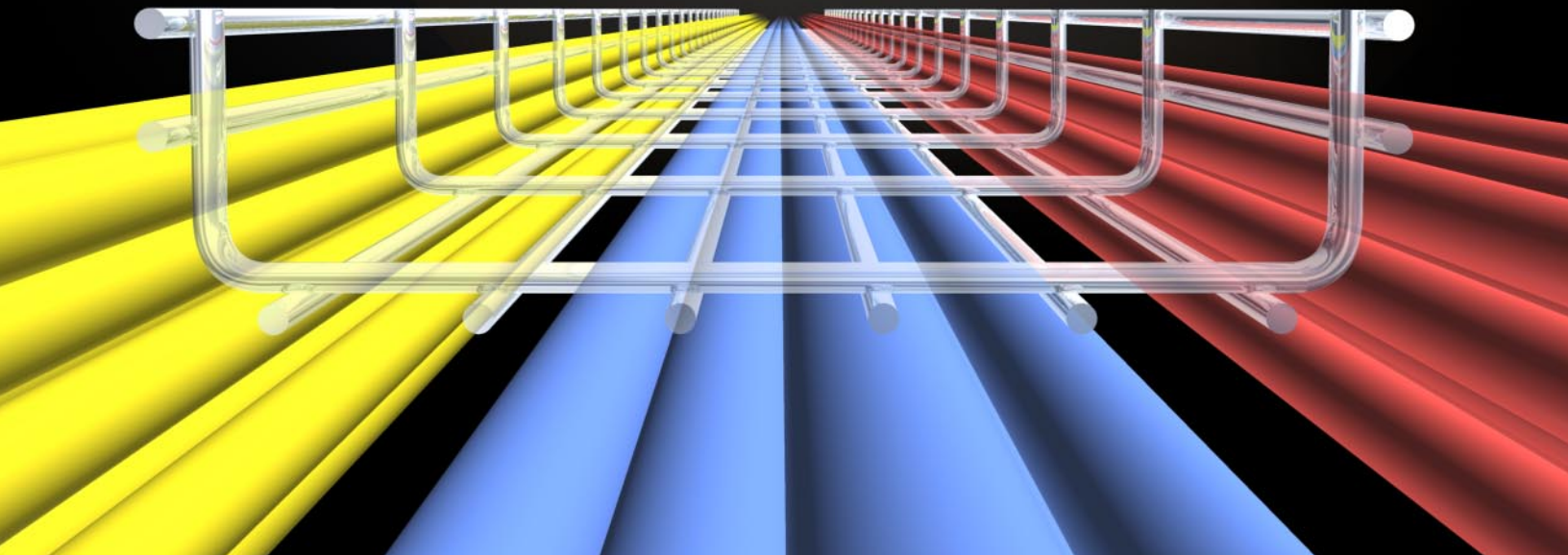


Marlboro Wire Tray

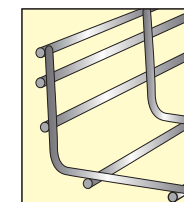
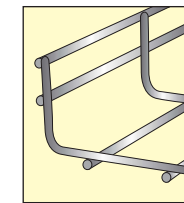
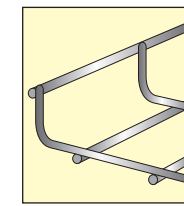
cable management system





With the Marlboro Wire Tray system you can create your own tees, elbows and risers right at the job site. Simply cut the wires of the cable tray to change existing configurations.

The Marlboro Wire cable management system can easily accommodate multiple levels by simply connecting several wire mesh trays. This offers users the ability to efficiently and economically adapt to future system applications.

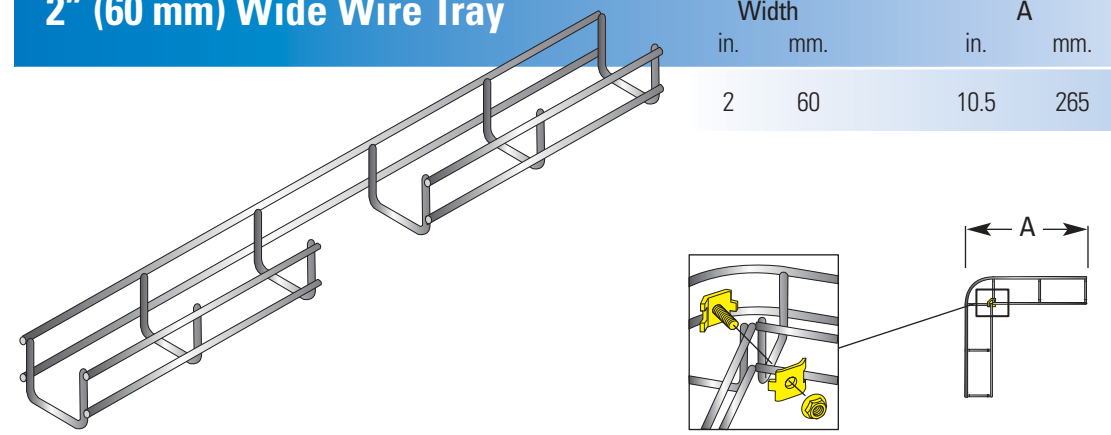


Part #	Depth	Width
WT1.5x2x10	1.5"	2"
WT1.5x4x10	1.5"	4"
WT1.5x6x10	1.5"	6"
WT1.5x8x10	1.5"	8"
WT1.5x12x10	1.5"	12"
WT2x2x10	2"	2"
WT2x4x10	2"	4"
WT2x6x10	2"	6"
WT2x8x10	2"	8"
WT2x12x10	2"	12"
WT2x16x10	2"	16"
WT2x18x10	2"	18"
WT2x20x10	2"	20"
WT2x24x10	2"	24"
WT4x8x10	4"	8"
WT4x12x10	4"	12"
WT4x16x10	4"	16"
WT4x18x10	4"	18"
WT4x20x10	4"	20"
WT4x24x10	4"	24"

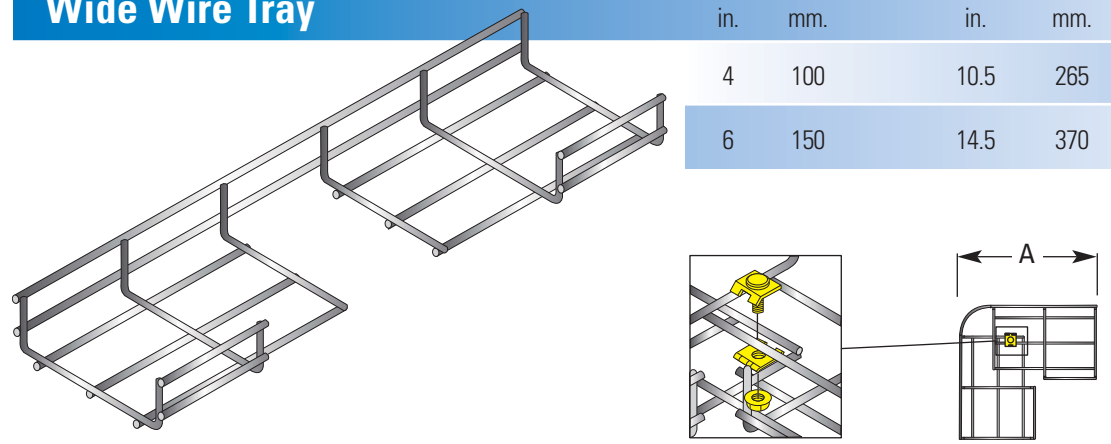
90° Short Radius Bends

To field cut and form a bend from a Marlboro Wire Tray straight section, cut side and bottom wires. Form and assemble using recommended connector assemblies as illustrated below.

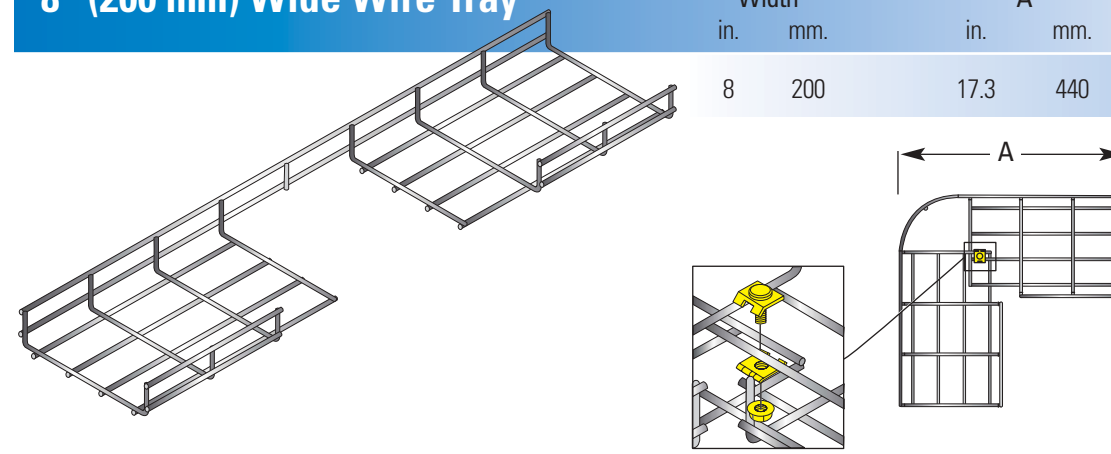
2" (60 mm) Wide Wire Tray		Wire Tray Width		A		Connector Assembly
in.	mm.	in.	mm.	in.	mm.	WT4CA
2	60	10.5	265			1



4" and 6" (100 and 150 mm) Wide Wire Tray		Wire Tray Width		A		Connector Assembly
in.	mm.	in.	mm.	in.	mm.	WT4CA
4	100	10.5	265			1
6	150	14.5	370			1



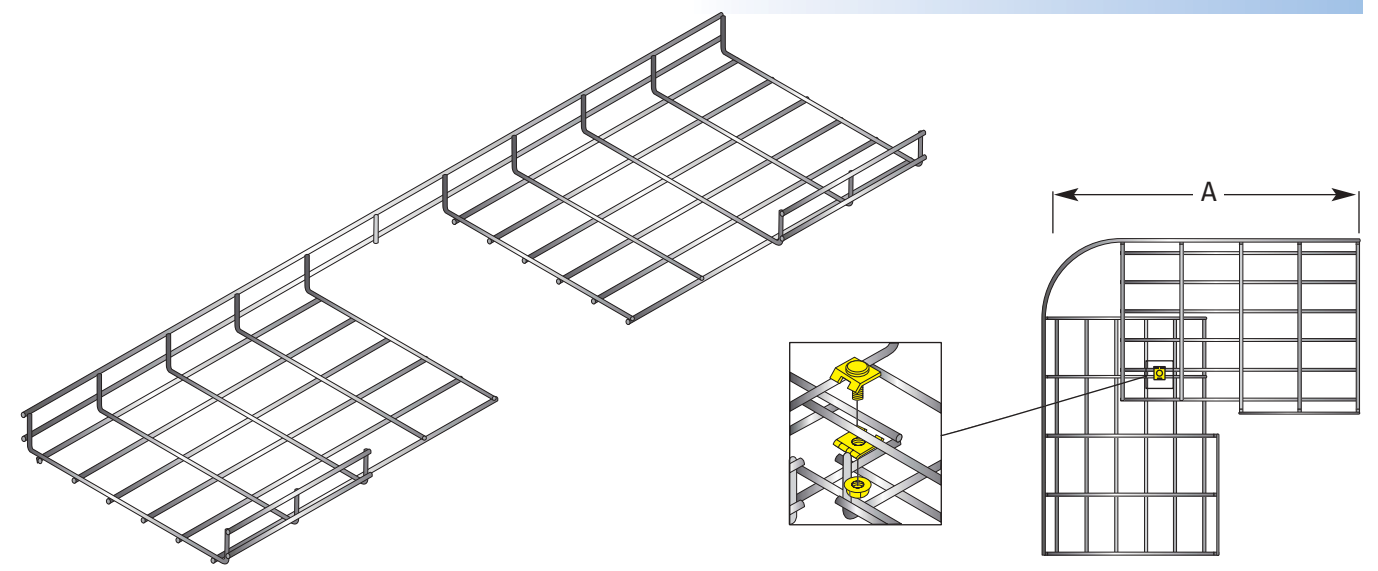
8" (200 mm) Wide Wire Tray		Wire Tray Width		A		Connector Assembly
in.	mm.	in.	mm.	in.	mm.	WT4CA
8	200	17.3	440			1



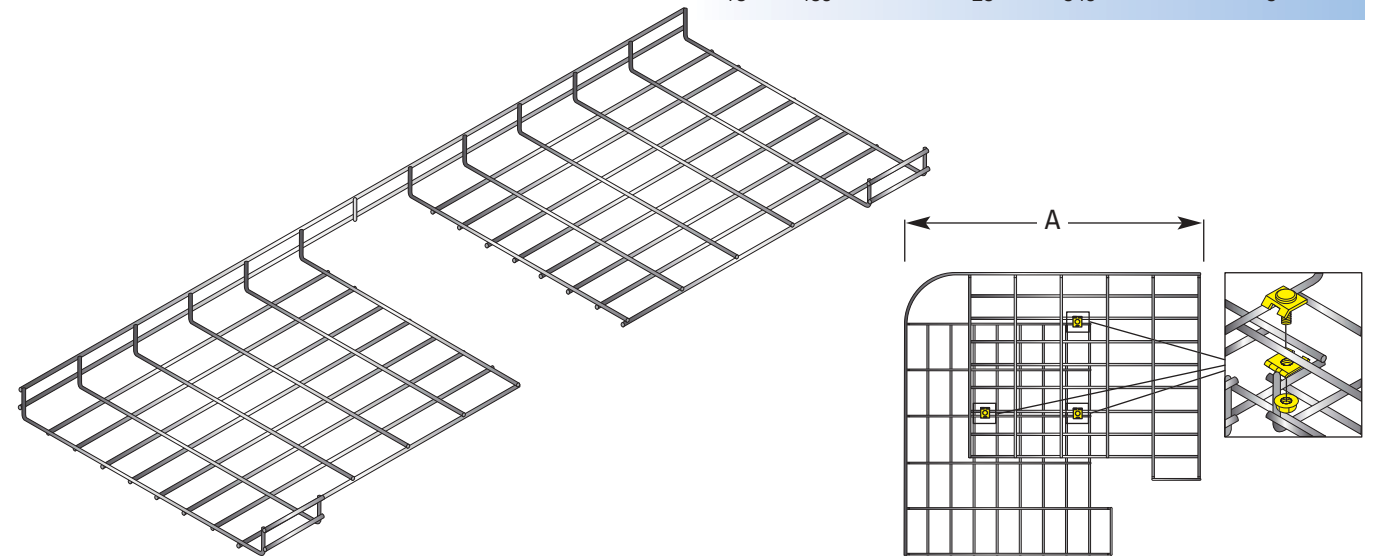
90° Short Radius Bends

To field cut and form a bend from a Marlboro Wire Tray straight section, cut side and bottom wires. Form and assemble using recommended connector assemblies as illustrated below.

12" (300 mm) Wide Wire Tray		Wire Tray Width		A		Connector Assembly
in.	mm.	in.	mm.	in.	mm.	WT4CA
12	300	21	530			1

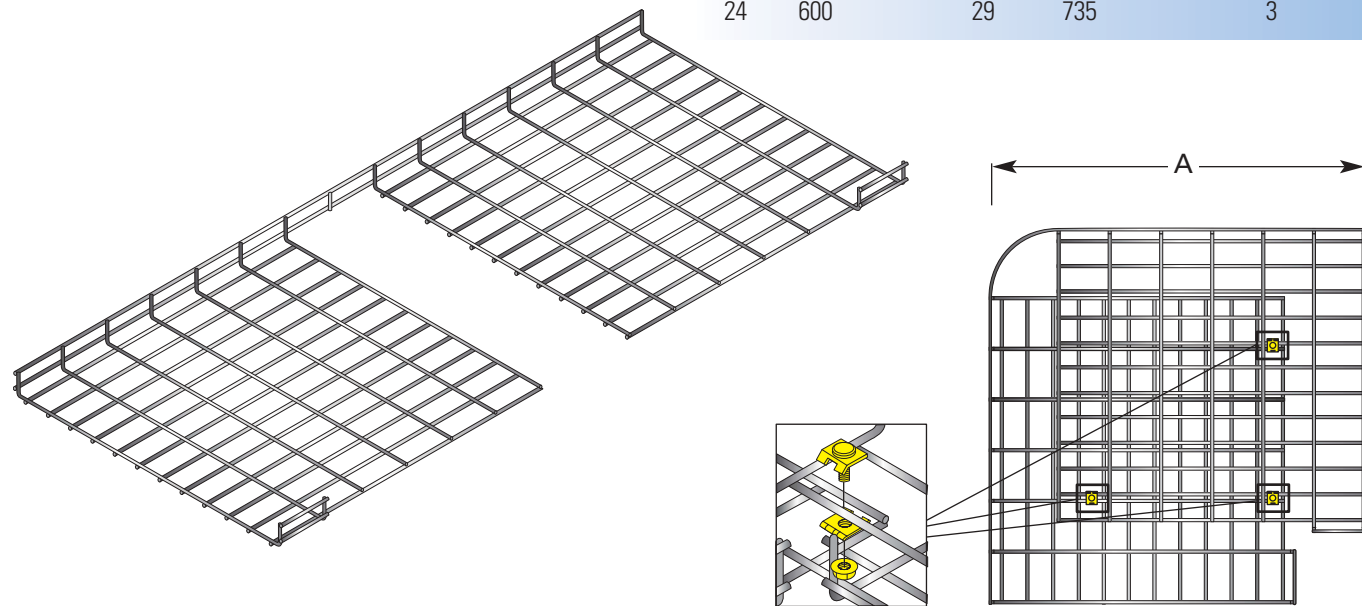


18" (450 mm) Wide Wire Tray		Wire Tray Width		A		Connector Assembly
in.	mm.	in.	mm.	in.	mm.	WT4CA
18	450	25	640			3



24" (600 mm) Wide Wire Tray

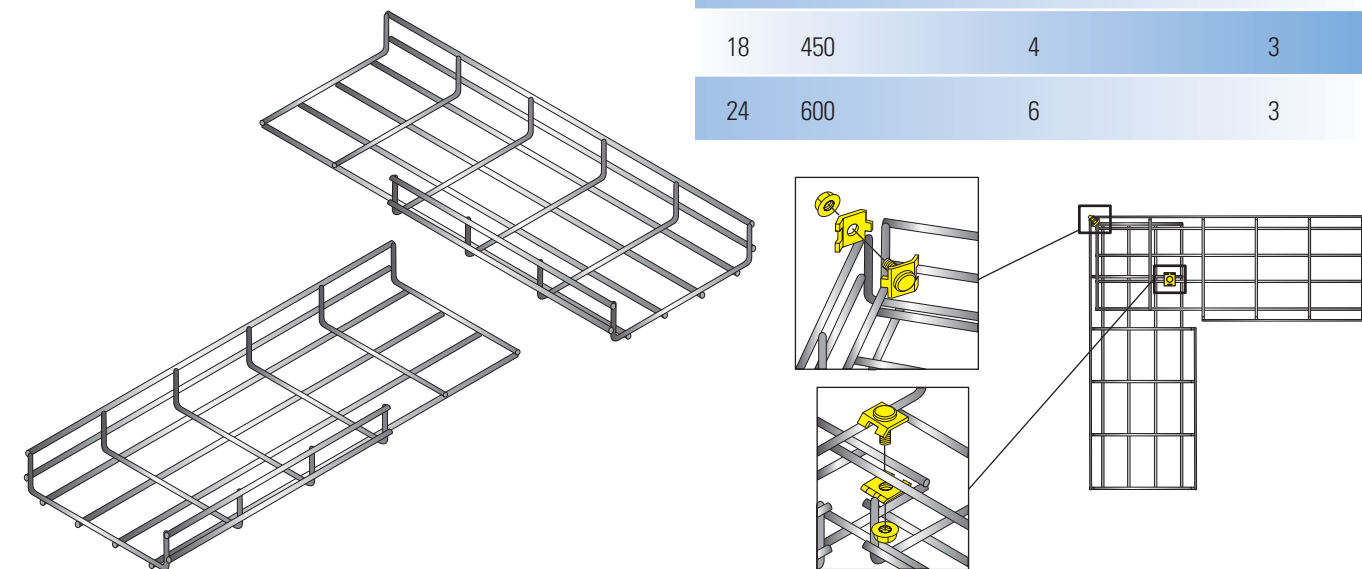
Wire Tray Width		A		Connector Assembly WT4CA
in.	mm.	in.	mm.	
24	600	29	735	3



90° Bends Assembled From Two Straight Sections

Wire Tray Width		Remove Segments	Connector Assembly WT4CA
in.	mm.		
4	100	1	2
6	150	2	2
8	200	2	2
12	300	3	2
18	450	4	3
24	600	6	3

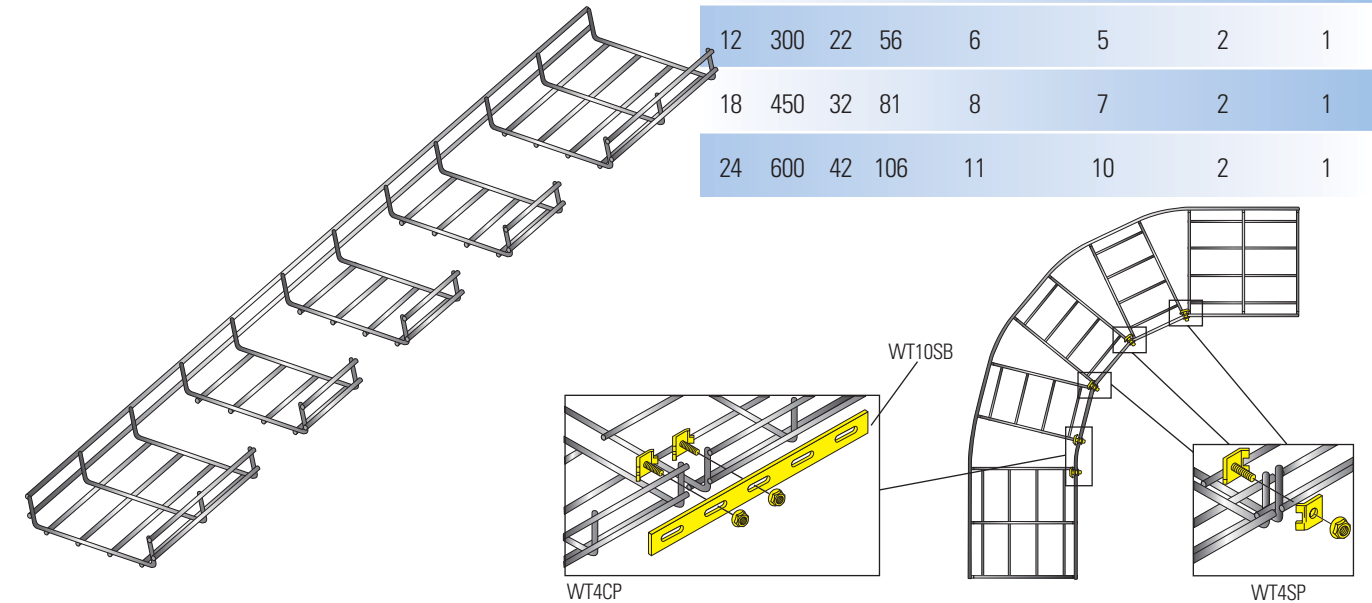
Two sections of Marlboro Wire Tray can be used to assemble a 90° horizontal bend. Cut side wires as illustrated. Information in the chart shows the number of segments (side wires) to cut and remove. Assemble using connector assemblies as illustrated.



90° Long Radius Bends

Wire Tray Width		Radius		Remove Segments	Connector Assembly WT4CA	Clamp Assembly WT4SP	Splice Bar WT10SB
in.	mm.	in.	mm.				
4	100	9.5	24	2	1	2	1
6	150	10.7	27	3	2	2	1
8	200	15	38	4	3	2	1
12	300	22	56	6	5	2	1
18	450	32	81	8	7	2	1
24	600	42	106	11	10	2	1

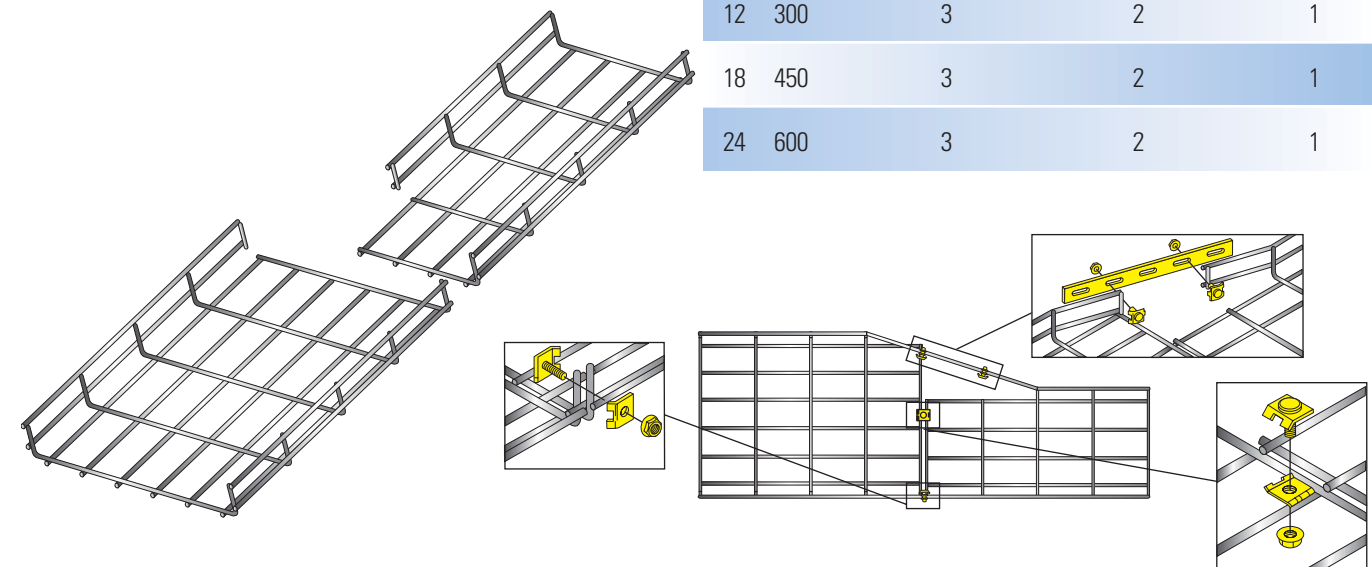
To field cut and form a bend from a Marlboro Wire Tray straight section, cut side and bottom wires. Form and assemble using recommended splice bars, connector and clamp assemblies as illustrated below.



Reducers

Wire Tray Width		Connector Assembly WT4CA	Clamp Assembly WT4CP	Splice Bar WT10SB
in.	mm.			
4	100	1	2	1
6	150	2	2	1
8	200	2	2	1
12	300	3	2	1
18	450	3	2	1
24	600	3	2	1

To connect two unequal widths of Marlboro Wire Tray, simply cut and assemble two tray sections using recommended splice bars, connector and clamp assemblies as illustrated.

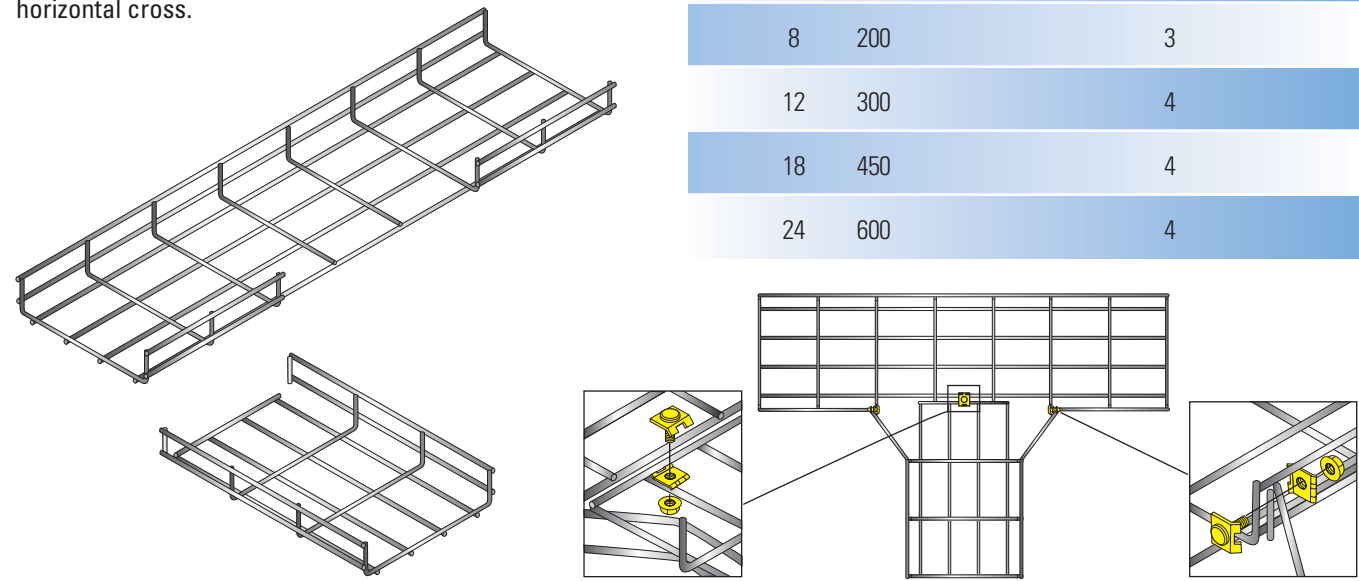


Horizontal Tees

To produce a horizontal tee from Marlboro Wire Tray straight sections, cut, form and assemble as illustrated. To produce a horizontal cross, duplicate the tee and assemble on the opposing side of the tee junction. Double the quantity of connector assemblies for a horizontal cross.

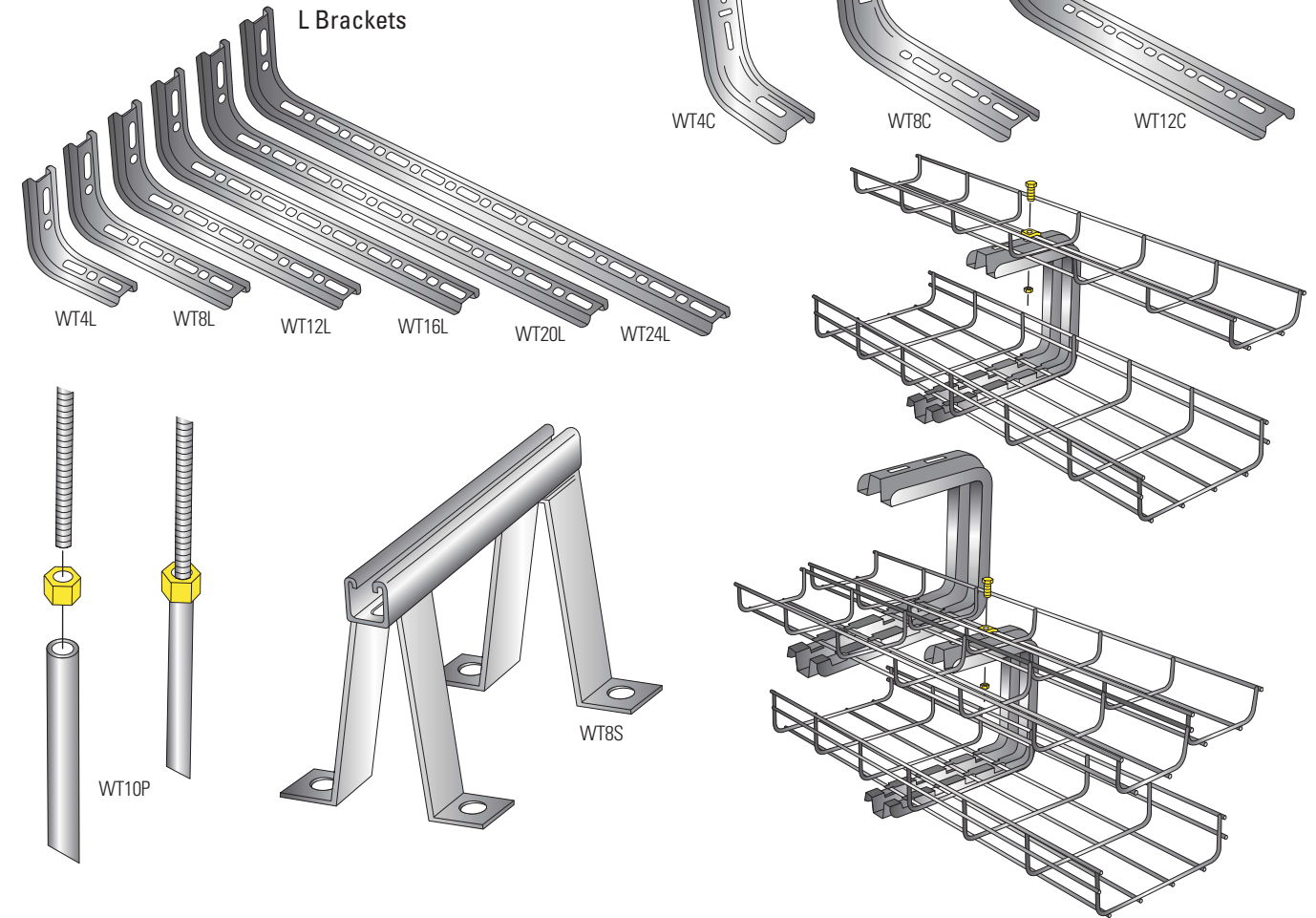
Wire Tray Width		Connector Assembly WT4CA
in.	mm.	
2	60	2
4	100	2
6	150	2
8	200	3
12	300	4
18	450	4
24	600	4

Wire Tray Width		Connector Assembly WT4CA
in.	mm.	
2	60	2
4	100	2
6	150	2
8	200	3
12	300	4
18	450	4
24	600	4



Support Options

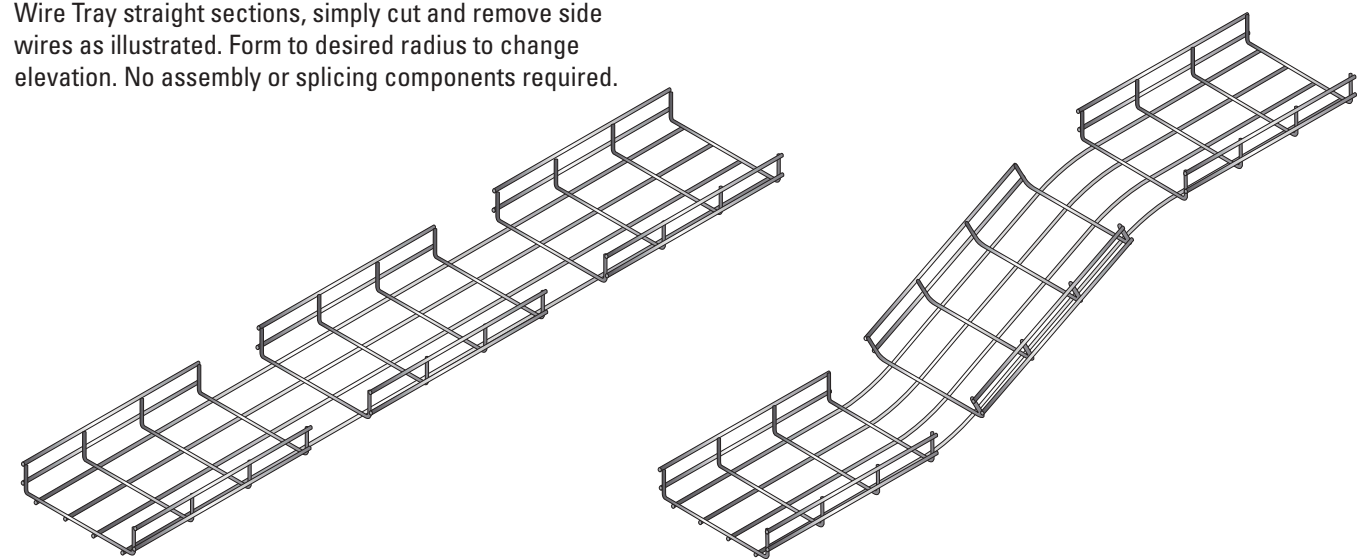
A complete selection of ceiling, wall or under floor mounting options are available.



M *vertical bend assembly guide*

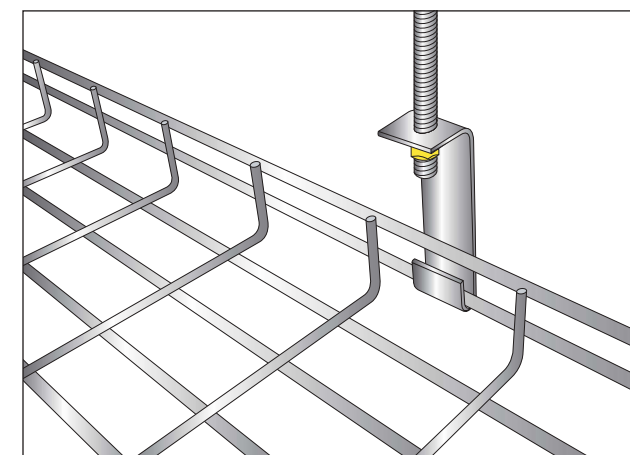
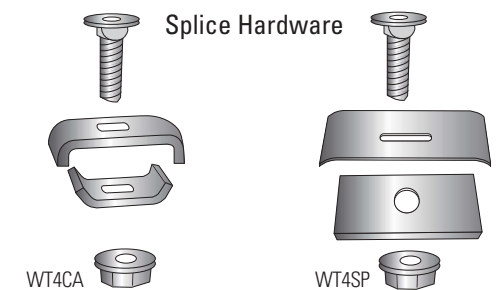
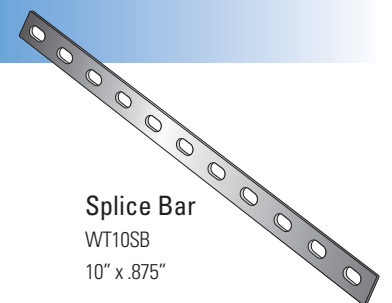
Vertical Inside and Outside Bends

To produce vertical inside and outside bends from Marlboro Wire Tray straight sections, simply cut and remove side wires as illustrated. Form to desired radius to change elevation. No assembly or splicing components required.



Splice Options

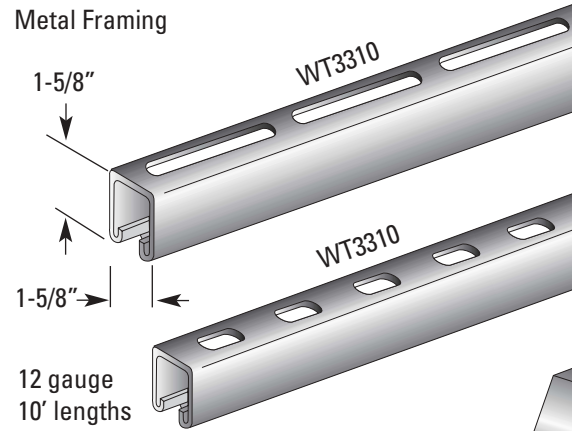
A wide variety of splice options enable you to connect a Marlboro Wire Tray quickly and economically.



Accessories

Additional items to complete your Marlboro Wire Tray installations.

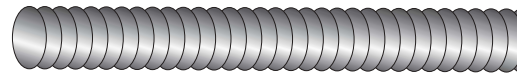
Metal Framing



12 gauge
10' lengths

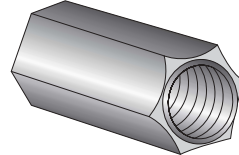
Finishes	Catalog No.
Galvanized	WT3310T4 WT3410T4
Painted	WT3310T3 WT3410T3

Threaded Rod



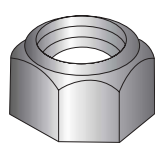
Catalog No.	Size
WT25072	1/4" - 20 x 72"
WT250120	1/4" - 20 x 120"
WT37572	3/8" - 16 x 72"
WT375120	3/8" - 16 x 120"
WT50072	1/2" - 13 x 72"
WT500120	1/2" - 13 x 120"

Coupling Nut



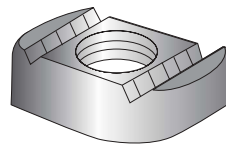
Catalog No.	Size
WT250CN	1/4" - 20
WT375CN	3/8" - 16
WT500CN	1/2" - 13

Hex Nut



Catalog No.	Size
WT250HN	1/4" - 20
WT375HN	3/8" - 16
WT500HN	1/2" - 13

Notch Nut



Catalog No.	Size
WT250NN	1/4" - 20
WT375NN	3/8" - 16
WT500NN	1/2" - 13

Hanging Options

